



Case Study: Viewshed Protection Area Zoning Law for the Town of Day

GIS Support to Local Government
NYS Adirondack Park Agency



Adirondack Park Agency

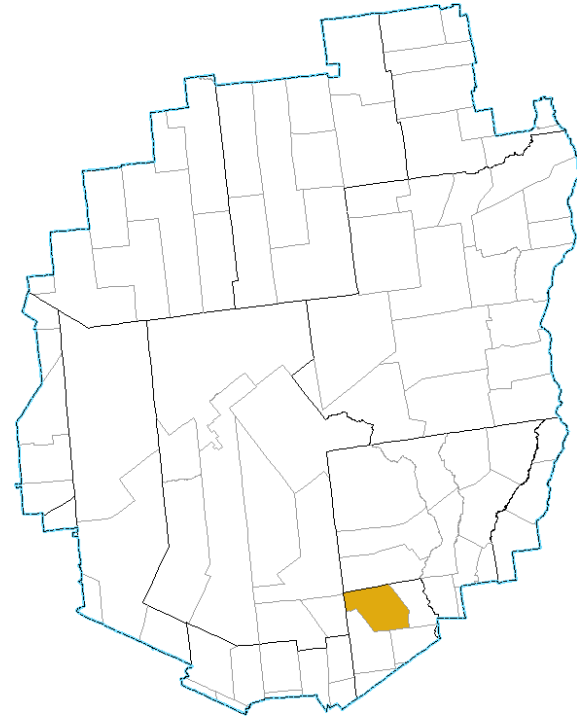
- Land Use Regulatory State Agency
- 70 Staff
- 10 staff doing part-time GIS (5% to 75%)
- 90% of Agency staff use GIS
- Approximately 100 municipalities in the 5.8 million acre park.

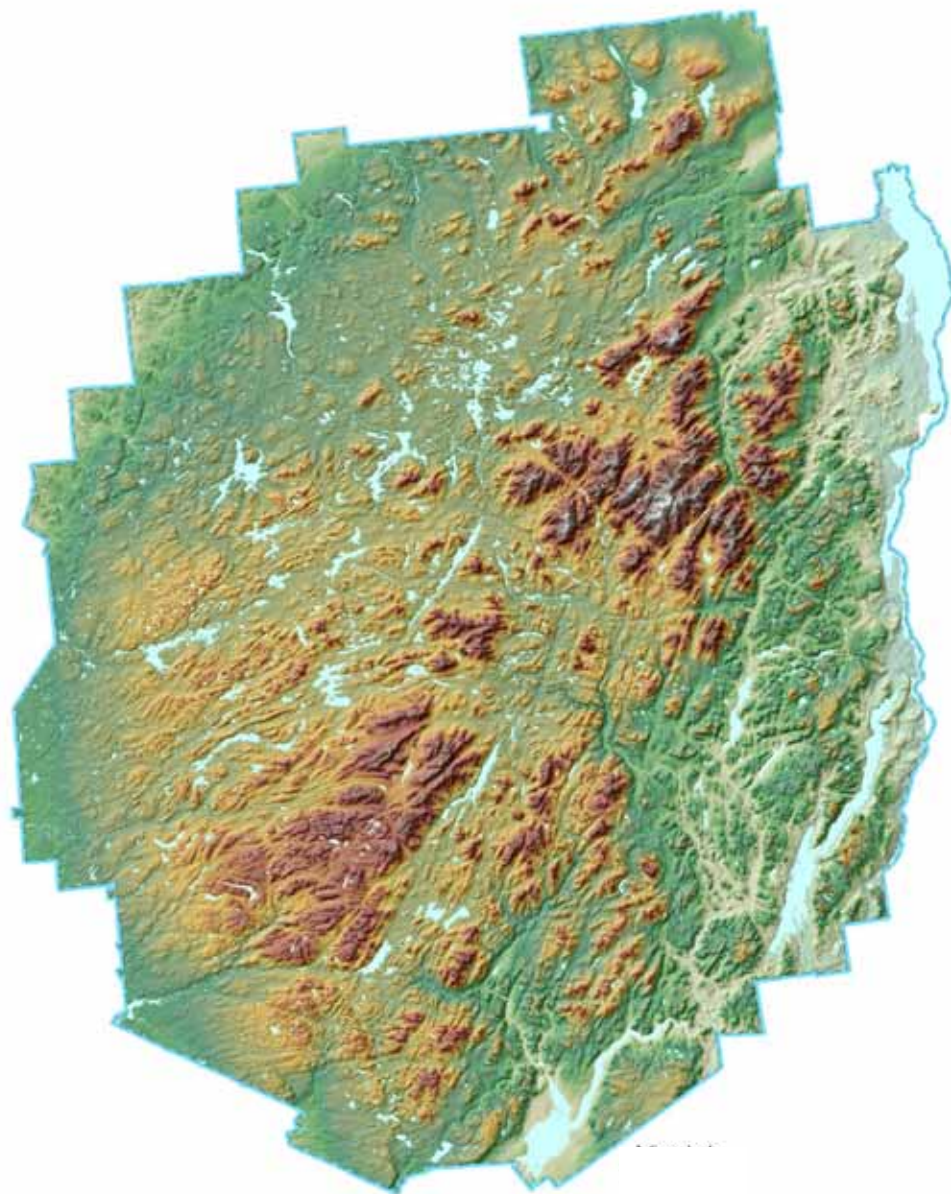
Local Government Support

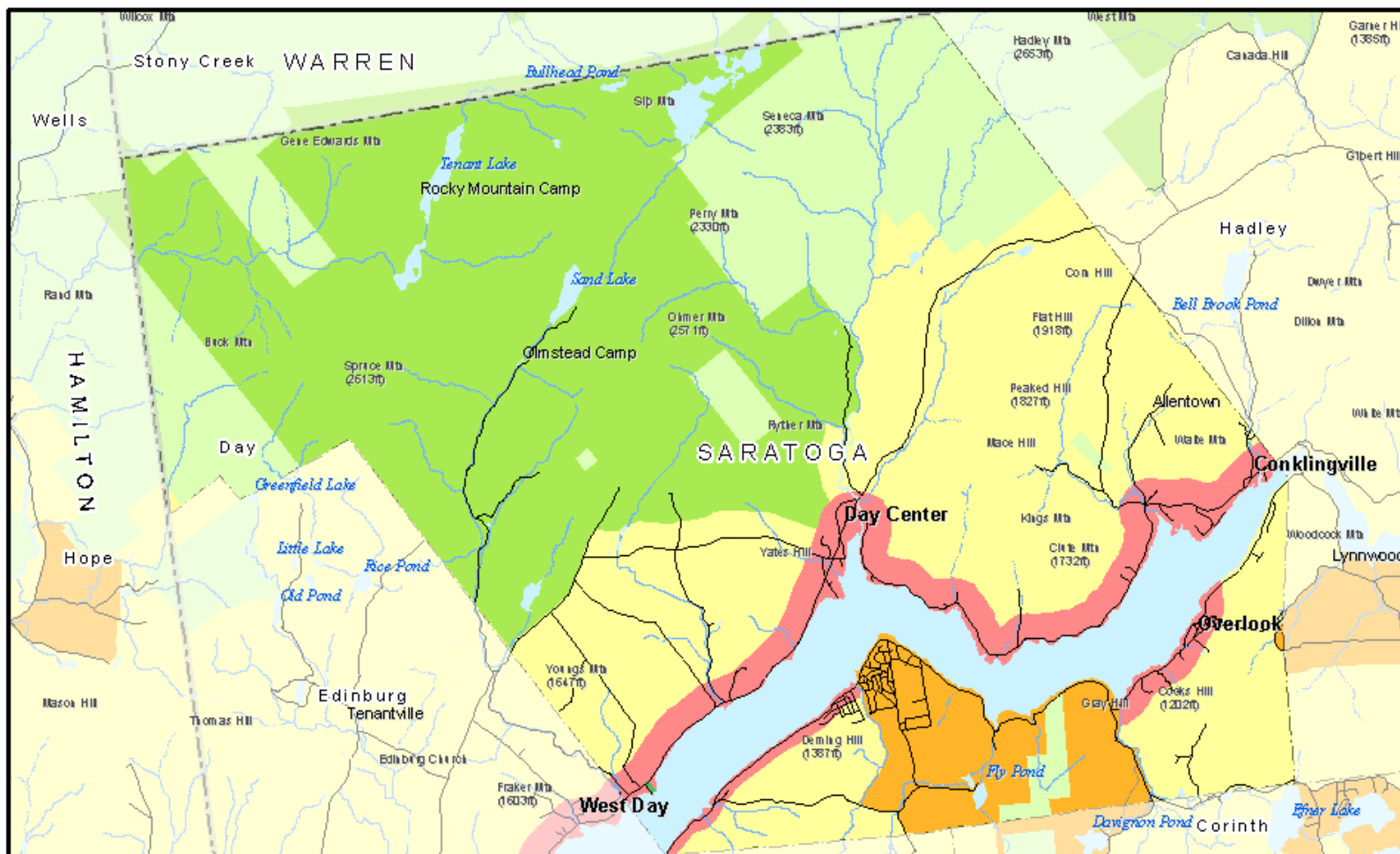
- Town of Day in Saratoga County
- Area 42,000 acres
- 2000 population = 920
- Est. 2% pop. growth

Single-family new house construction building permits:

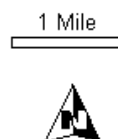
1996: 4 buildings, average cost: \$50,000
1997: 5 buildings, average cost: \$89,000
1998: 9 buildings, average cost: \$28,300
1999: 3 buildings, average cost: \$250,000
2000: 9 buildings, average cost: \$74,400
2001: 7 buildings, average cost: \$71,700
2002: 6 buildings, average cost: \$53,500
2003: 10 buildings, average cost: \$71,000
2004: 13 buildings, average cost: \$121,800







Town of Day APA Land Classification



Adirondack
Park Agency
February 2005
This map should
not be used for legal
jurisdictional determinations.









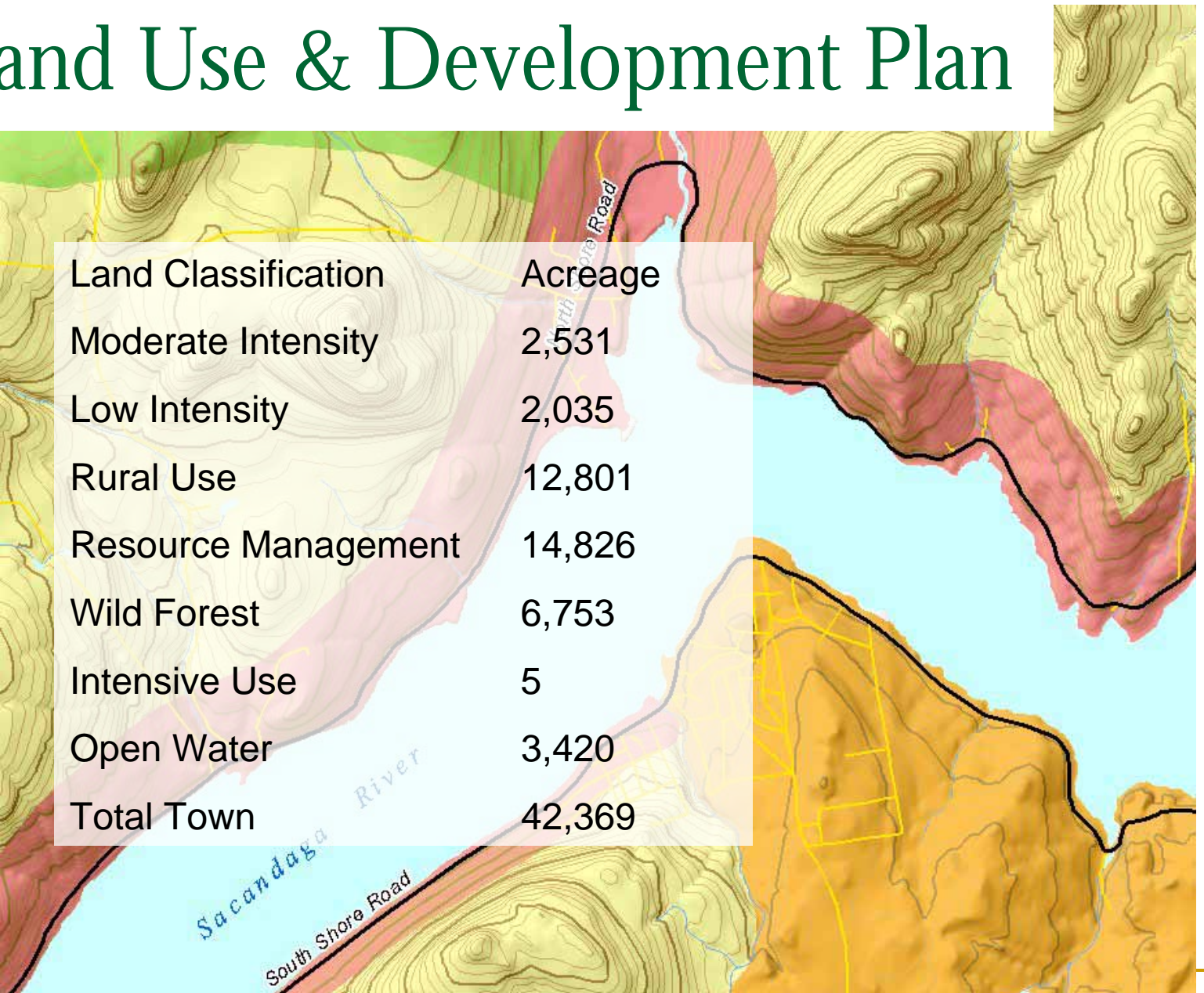
KEY

- LR — Lakefront Residential
- RRC — Residential/Resource Conservation
- RLD — Residential Low Density
- RMD — Residential Moderate Density
- NC-1 — Neighborhood Commercial Areas
see inserts

ZONING MAP
TOWN OF DAY
 SARATOGA COUNTY NEW YORK
 TOWN OF DAY PLANNING BOARD

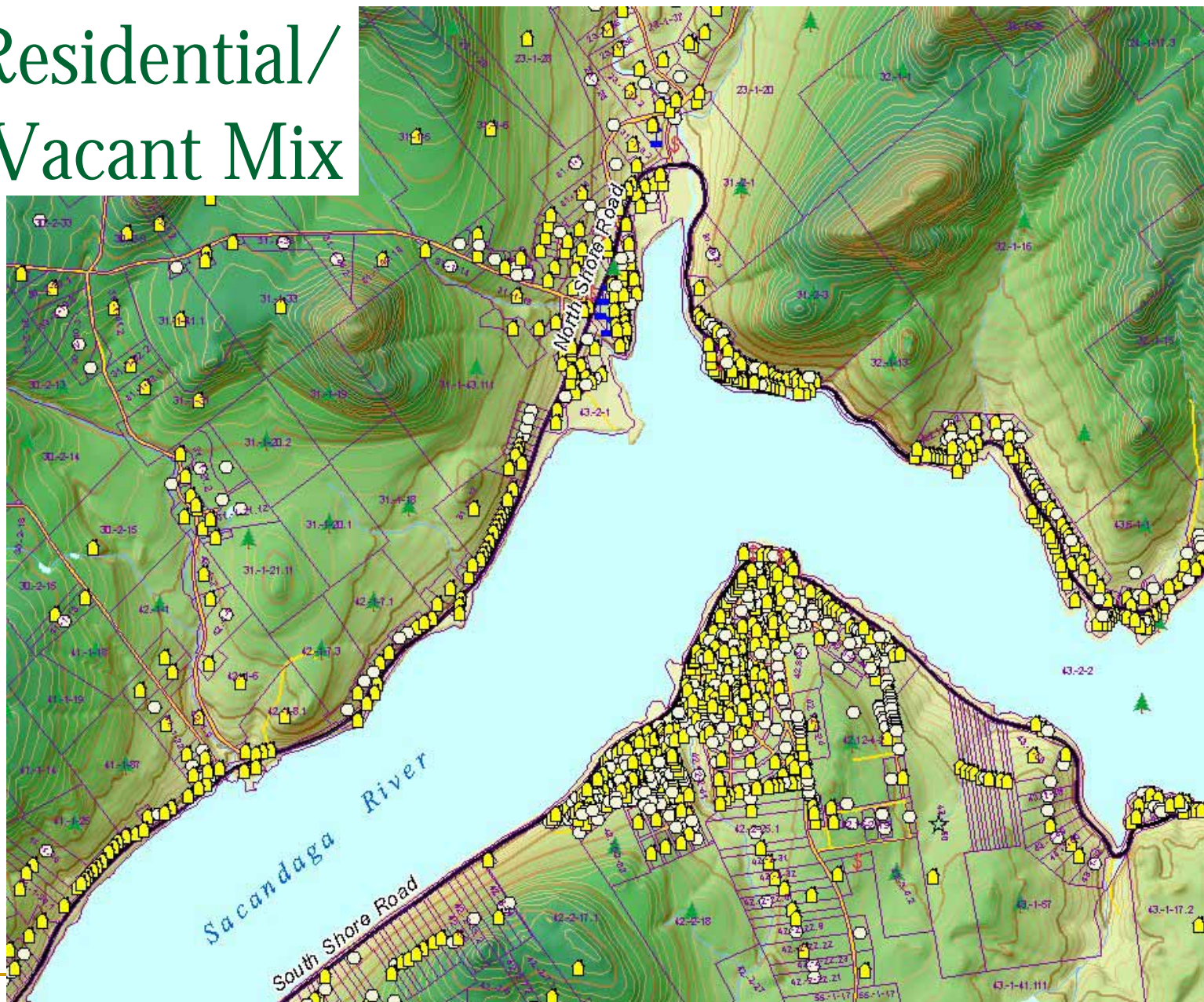
PREPARATION OF THIS MAP WAS FINANCIALLY AIDED THROUGH A GRANT FROM
 THE STATE OF NEW YORK PURSUANT TO CH.53 SUB.1 OF THE LAWS OF 1981.

Land Use & Development Plan



Land Classification	Acreage
Moderate Intensity	2,531
Low Intensity	2,035
Rural Use	12,801
Resource Management	14,826
Wild Forest	6,753
Intensive Use	5
Open Water	3,420
Total Town	42,369

Residential/ Vacant Mix





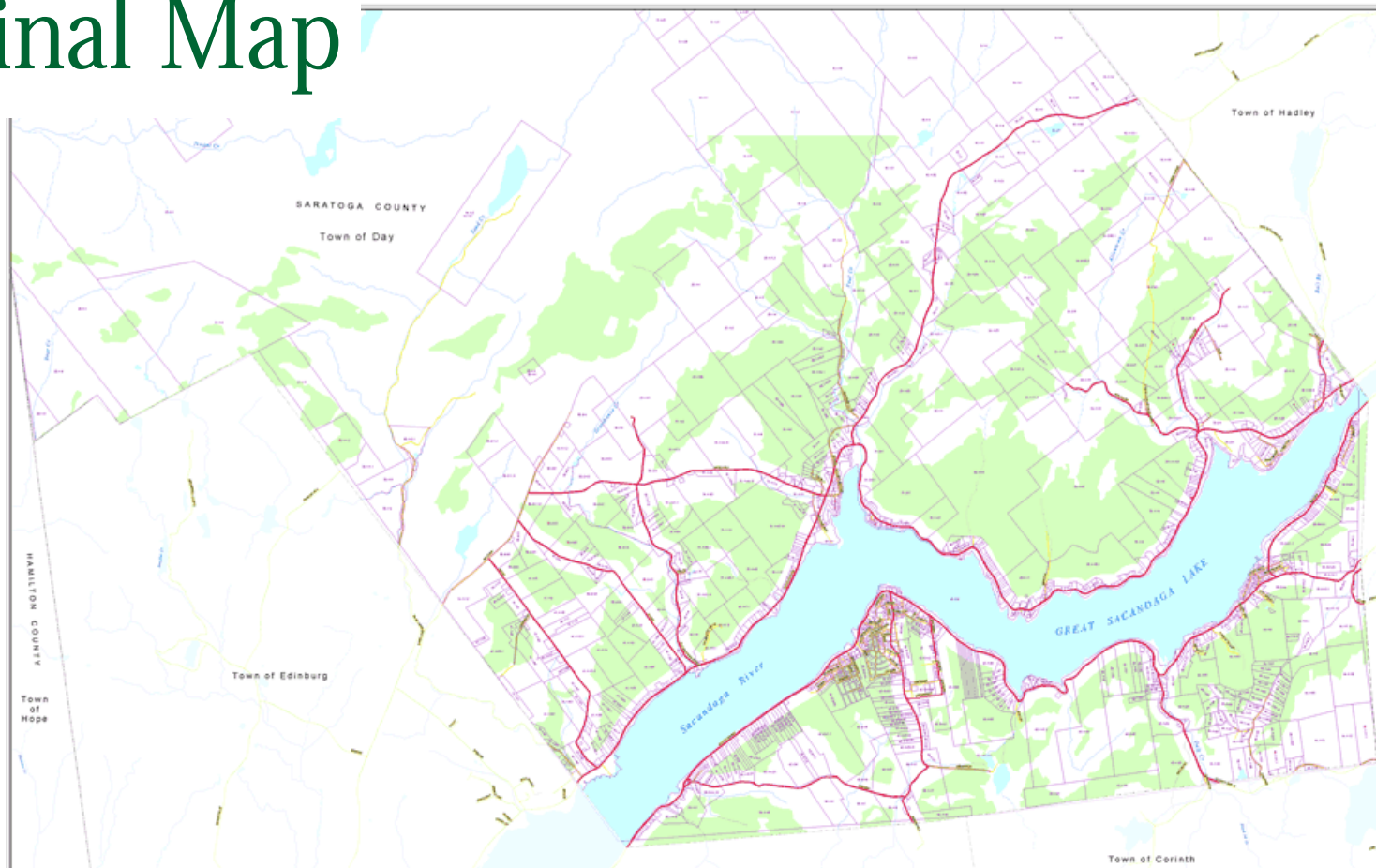
Town of Day Local Law Amending Town Land Use Laws – June 22, 2005

Section 4.8 Town of Day Viewshed Protection Area

4.8.1 Area Established. A Town of Day Viewshed Protection Area is established. The Town of Day Viewshed Protection Area is the area designated on the Town of Day Viewshed Protection Area Map, a copy of which is hereby incorporated into this Zoning Law. The Town of Day Viewshed Protection Area is an overlay district; for areas included in the Town of Day Viewshed Protection Area, the provisions of this Section 4.8 apply as well as the provisions applicable to the district in question (Sections 4.1 through 4.7) and the other provisions of this Zoning Law.

4.8.2 Intent. The Town Board of the Town of Day finds that many landscape features, geological features and other resources of the Town of Day and the Adirondack Park have special aesthetic, scenic or historical value. Many of these resources are located in this Town of Day Viewshed Protection Area. Great Sacandaga Lake is a significant resource of the Town, and many of the resources located in the Town of Day Viewshed Protection Area are visible from Great Sacandaga Lake, or from public roads. In order to protect and preserve those resources and to prevent or diminish the loss of those irreplaceable resources, the Town Board hereby declares it to be the public policy of the Town of Day to protect, perpetuate and enhance those resources.

Final Map



Town of Day Viewshed Protection Area

- Visible
- Not Visible
- 2004 Parcels
- County Boundary
- Town Boundary
- Major Roads
- Stream
- Intermittent Stream

0 0.5 1 Miles



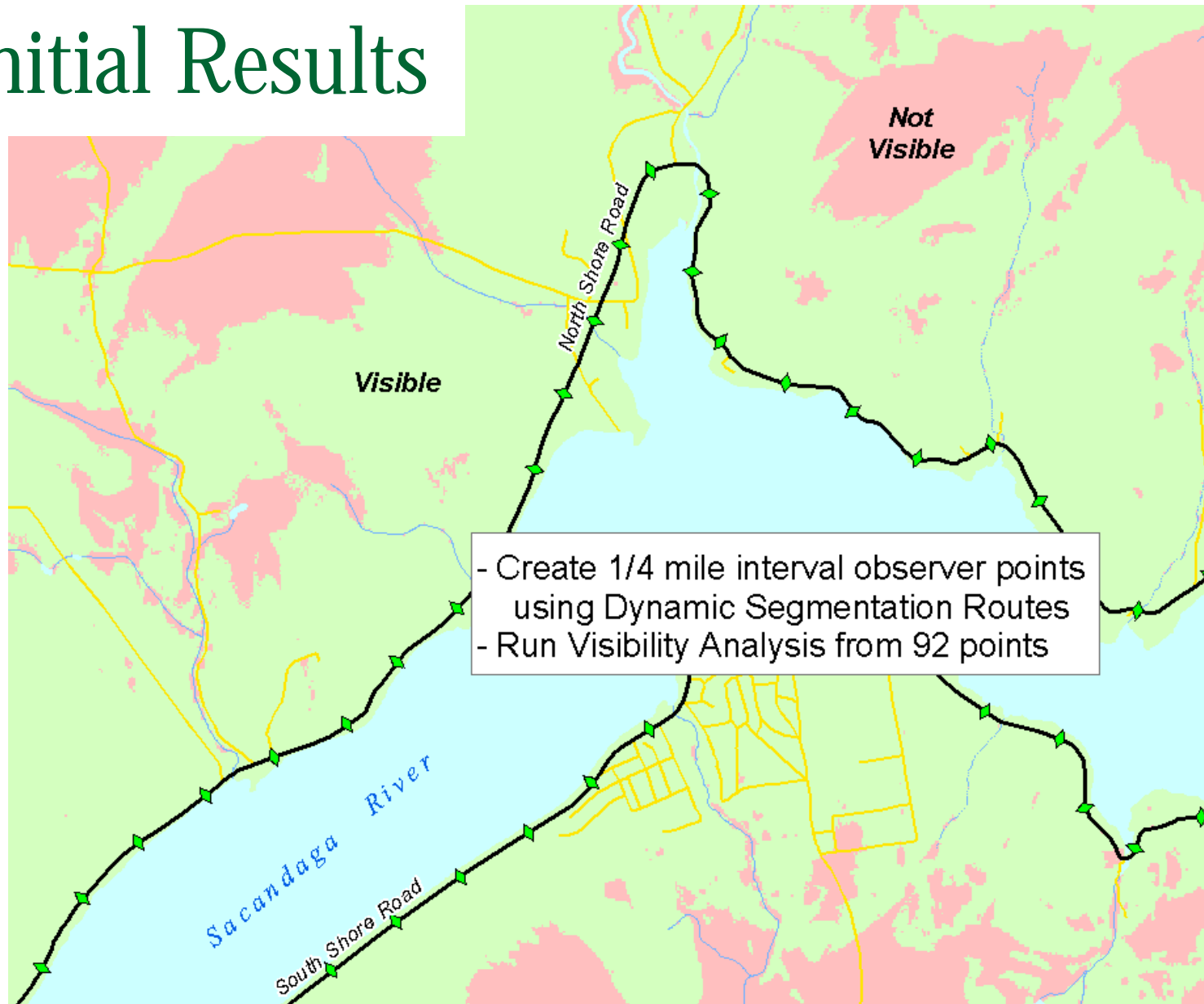
May 2005

Prepared by the Adirondack Park Agency

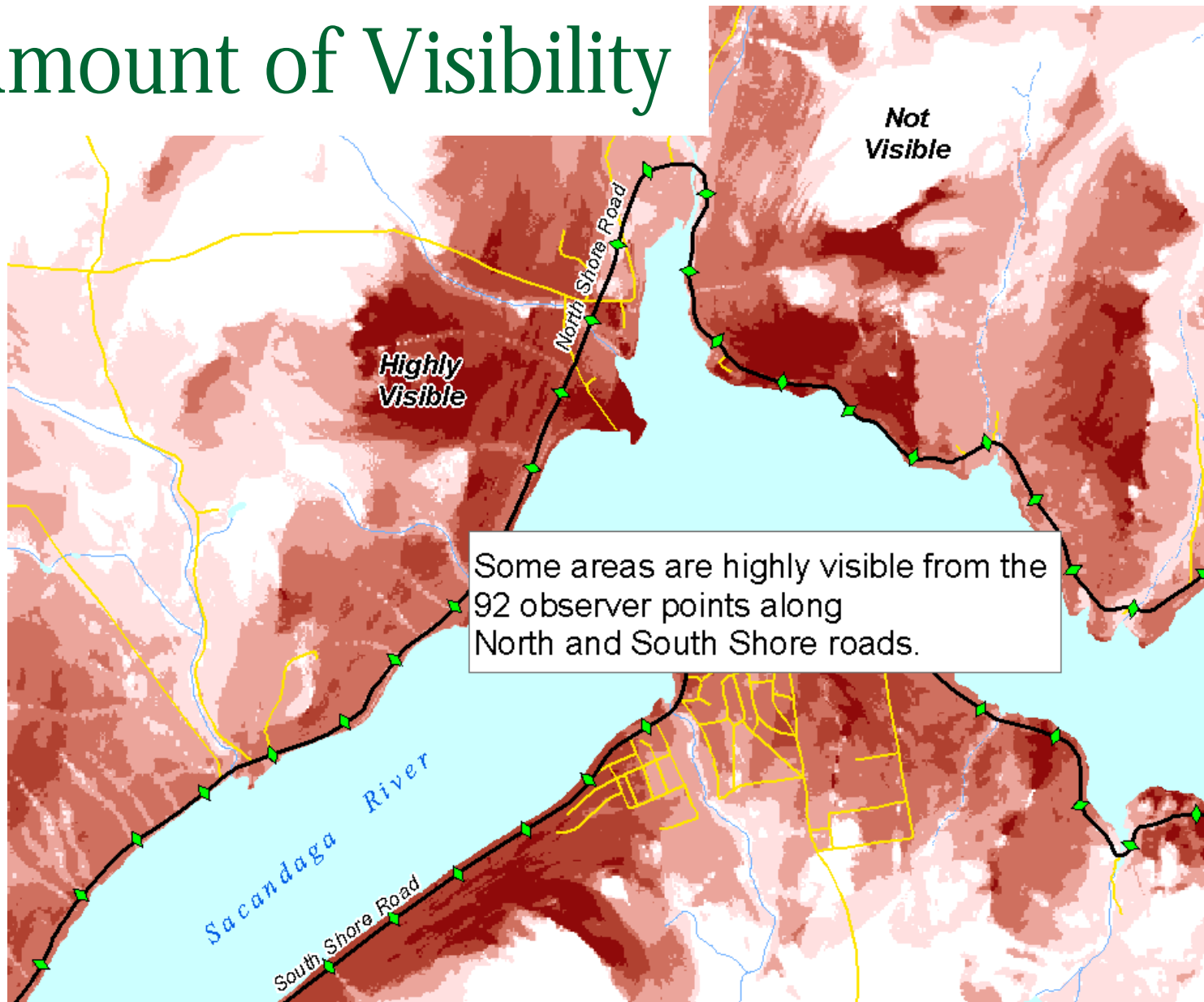


Data Sources: Visibility - Adirondack Park Agency (APR) in consultation with the Town of Day; derived from NYS Dept. of Environmental Conservation (DEC) and USGS elevation data; Parcels - Saratoga County; Roads - NYS Open Source and Official Infrastructure Coordination; Contours & Surface Water - NYS DEC and USGS; Place Names - USGS and NYS; Other Layers - APR.

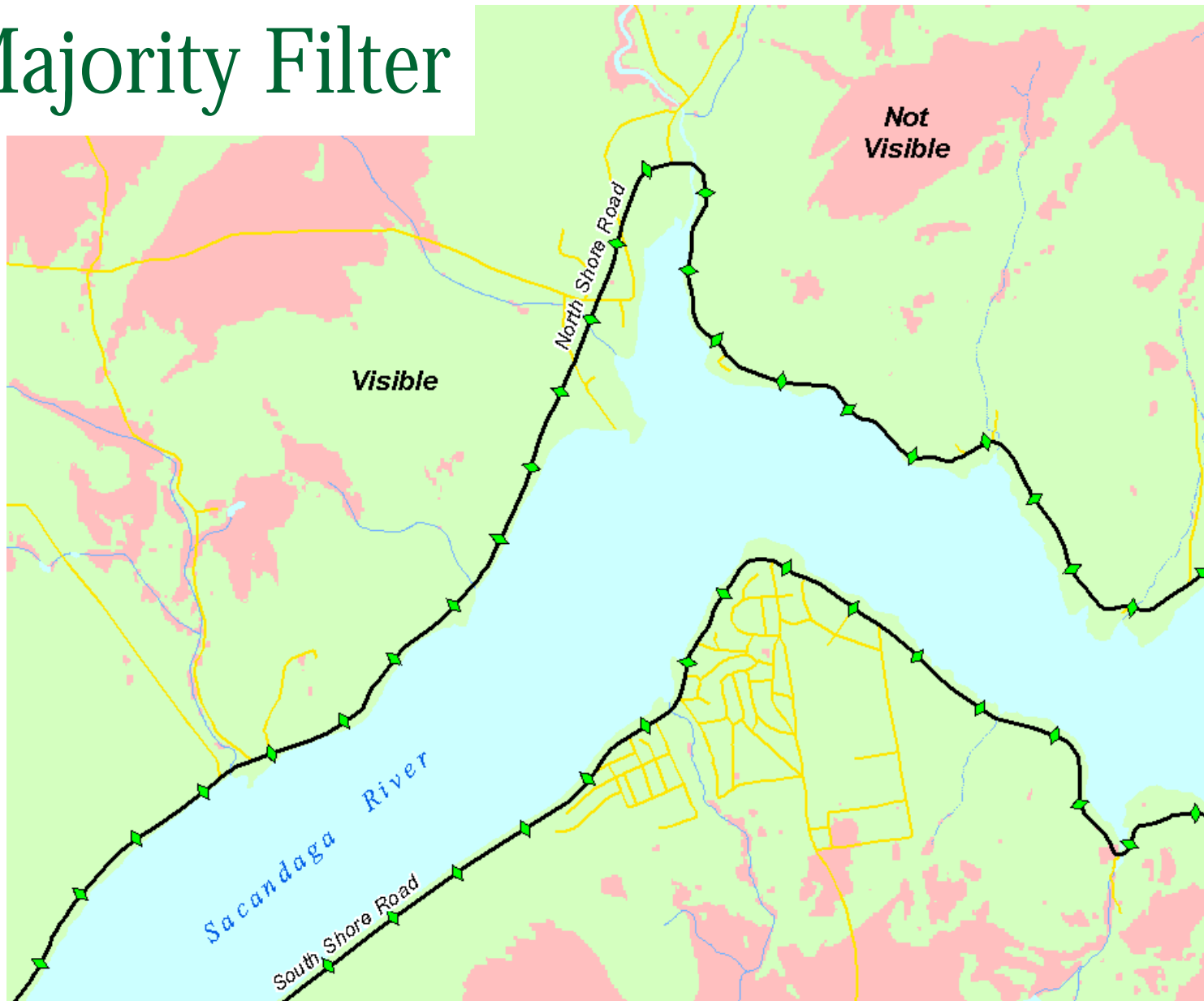
Initial Results



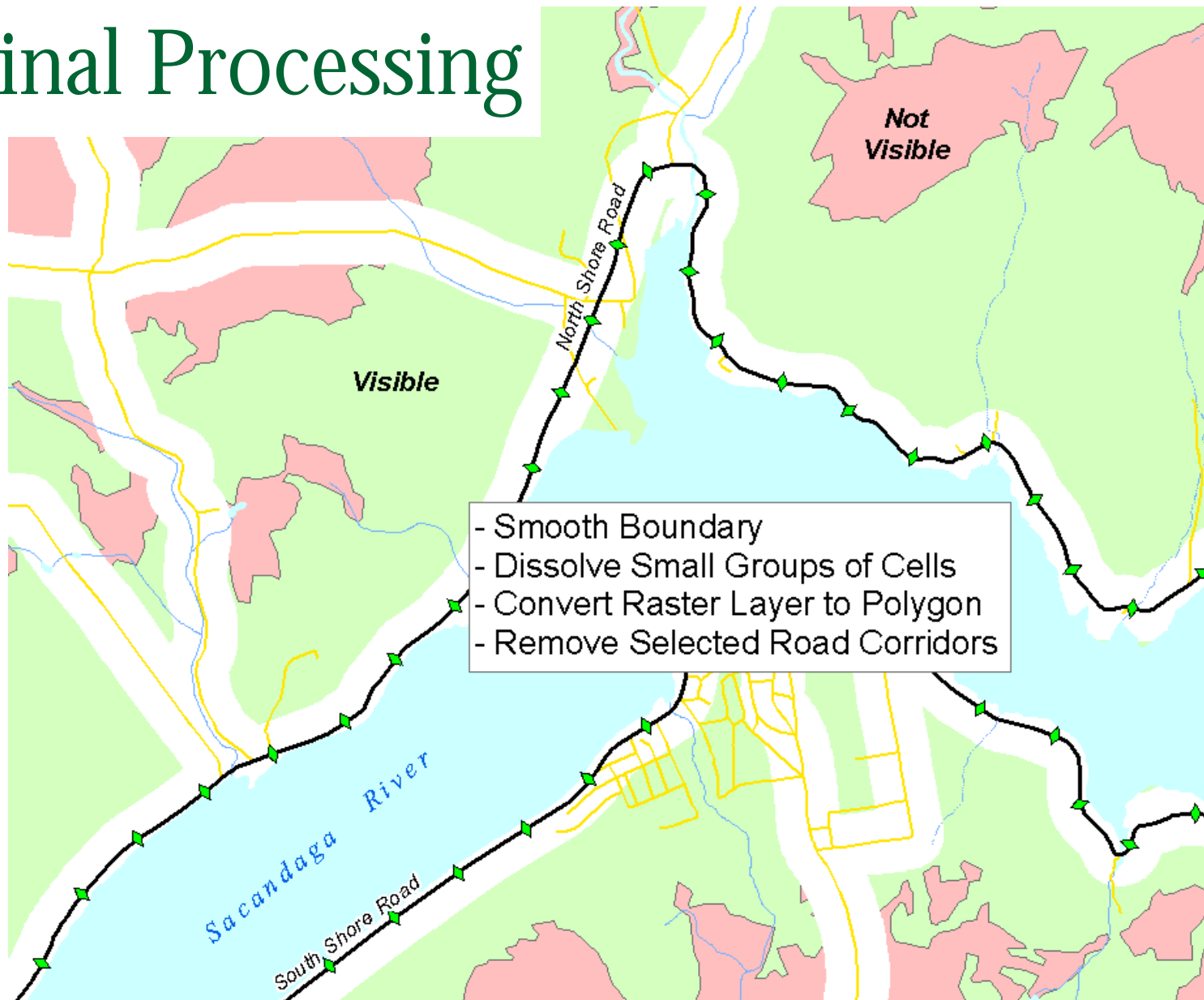
Amount of Visibility



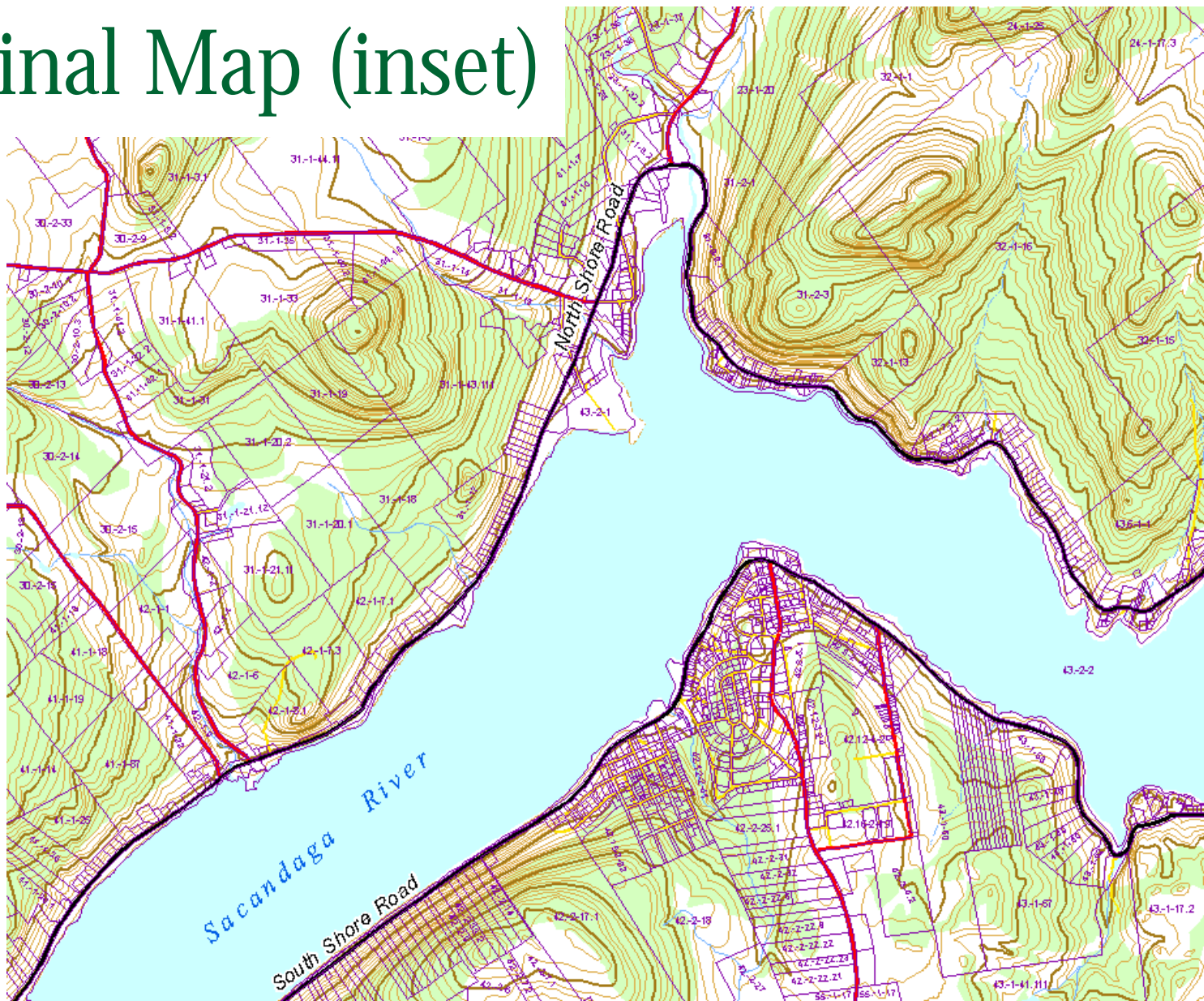
Majority Filter



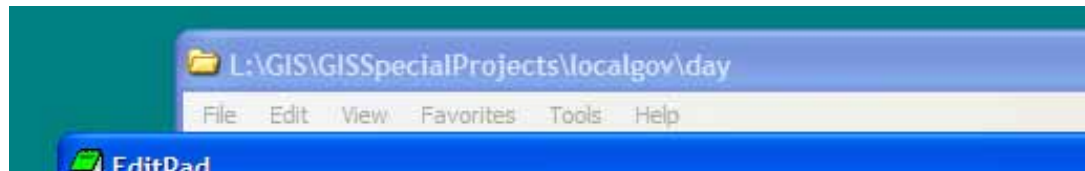
Final Processing



Final Map (inset)



Take Notes!



Run Visibility Analysis:

Run ArcToolbox>Spatial Analyst Tools>Surface>Viewshed

syntax: Viewshed daydem QrtrMileShorePts2 D:\GIS\GISSpecialProjects\localgov\day\ShoreView2 1 FLAT_EARTH #

Reclass Visibility Results:

Run ArcToolbox>Spatial Analyst Tools>Reclass>Reclassify

syntax: Reclassify "Visibility from N & S Shore Rds" Value "0 0;0 51 1" D:\GIS\GISSpecialProjects\localgov\day\Reclass_Vis DATA

Run Majority Filter:

Replaces cells of a raster based upon the majority value of contiguous neighboring cells.

Run ArcToolbox>Spatial Analyst Tools>Generalization>Majority Filter

MajorityFilter reclass_vis D:\GIS\GISSpecialProjects\localgov\day\Maj_Vis FOUR MAJORITY

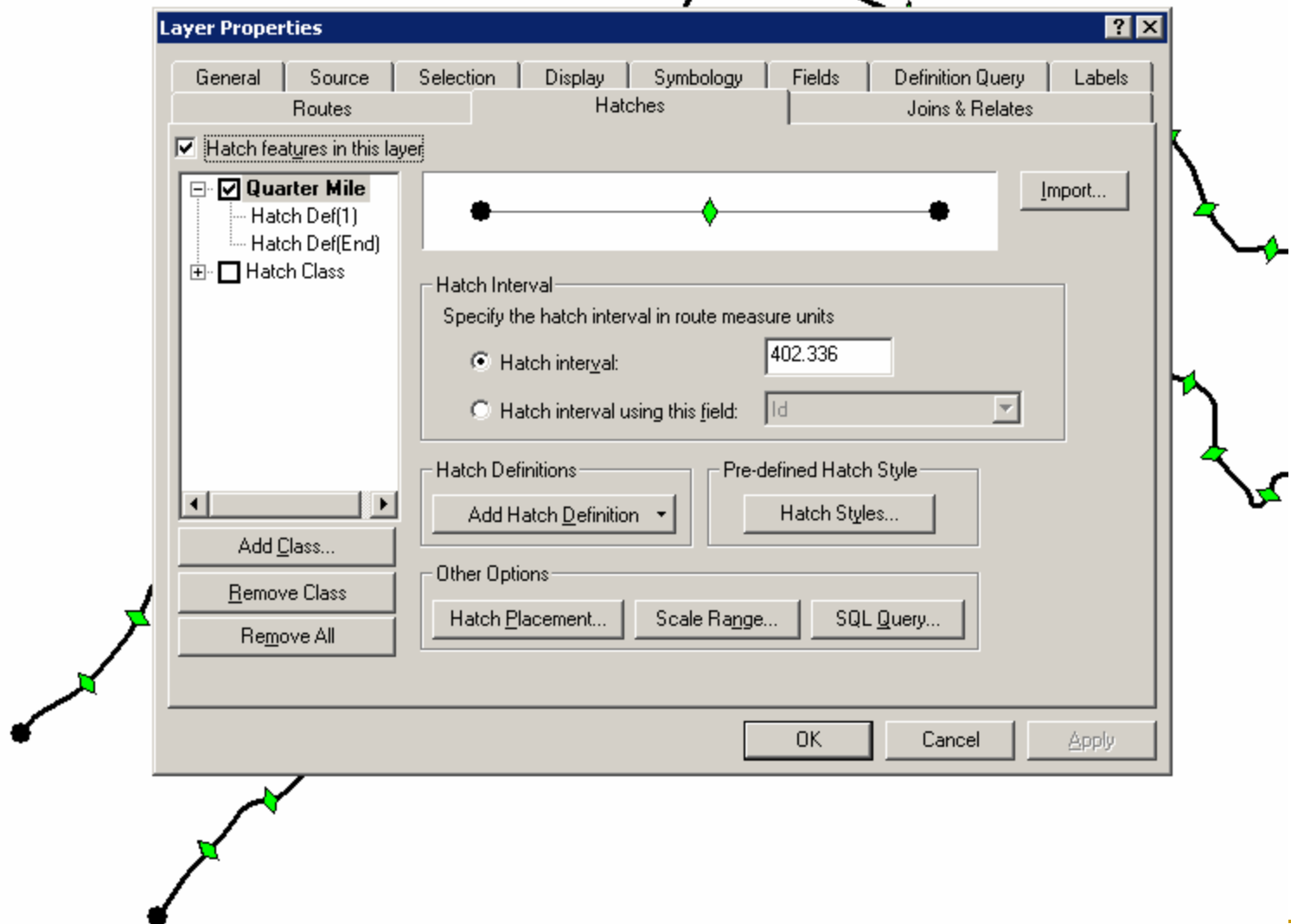
Run Boundary Clean:

Smooths the boundary between zones by expanding and shrinking the boundary.

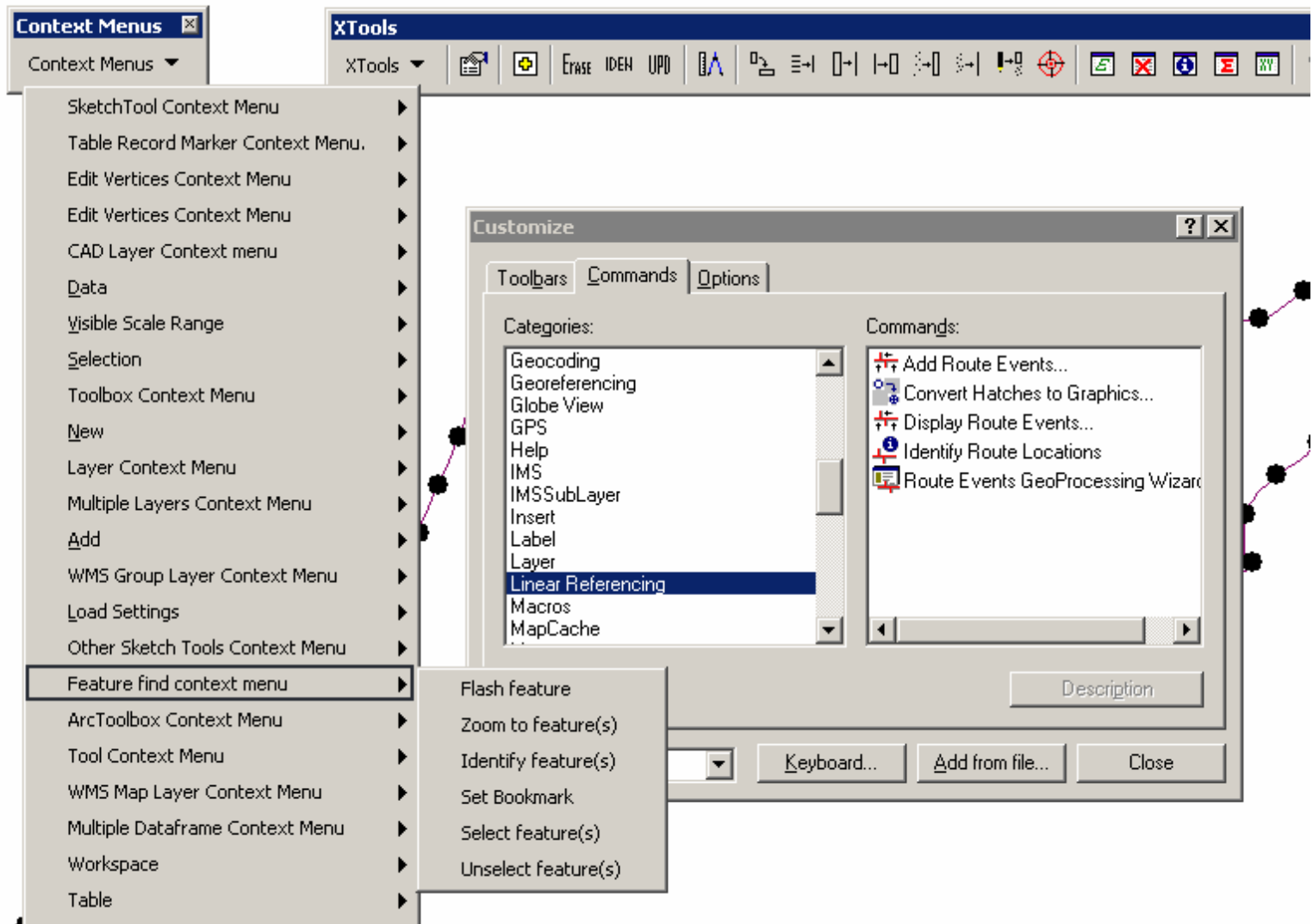
Run ArcToolbox>Spatial Analyst Tools>Generalization>Boundary Clean

- 1) Right click in menu area to open Customize Toolbars.
- 2) Click Context Menus check box
- 3) Select Customize>Commands tab and click Linear Referencing
- 4) Open Context Menus>Feature Layer Context Menu
- 5) Drag the "Convert Hatches to Graphics..." command to the

Hatches



Convert Hatches to Graphics





Spatial Analyst Tools Used

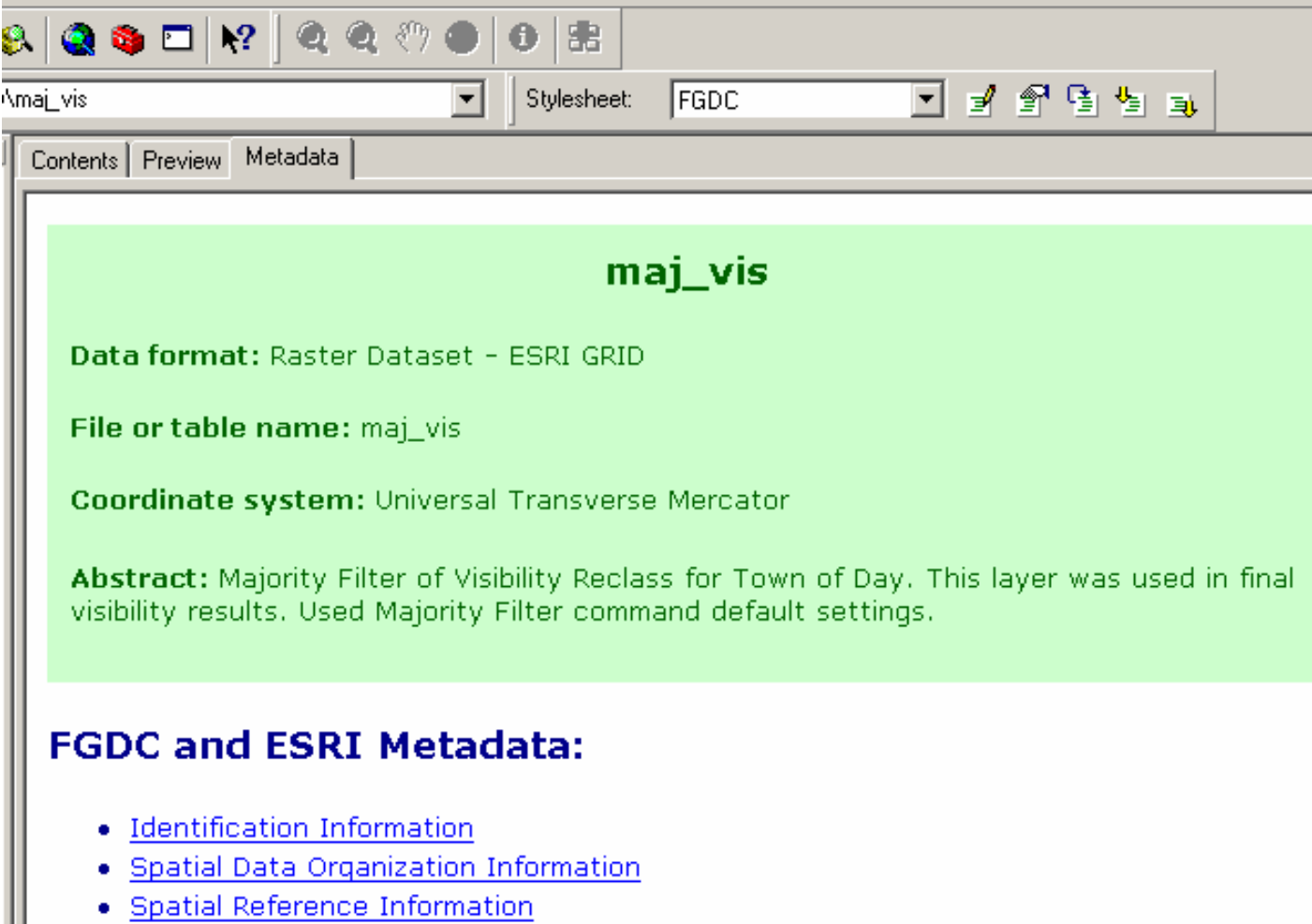
- ExtractByMask – creates a town DEM
 - Viewshed – the visibility analysis using shore points
 - Reclassify – “on/off” data
 - Majority Filter – remove “salt and pepper”
 - Boundary Clean
 - Region Group, Extract by Attributes, Nibble
-



Vector Process

- Raster to Polygon
- Buffer – remove 1/10 mile setback from selected roads.
- Erase – remove northern, mostly Forest Preserve area of town.

Metadata



The screenshot shows a GIS application interface. At the top is a toolbar with various icons for navigation and editing. Below the toolbar is a header bar with a text field containing 'maj_vis' and a 'Stylesheet' dropdown menu set to 'FGDC'. Below the header bar are three tabs: 'Contents', 'Preview', and 'Metadata'. The 'Metadata' tab is selected, displaying a light green background with the following information:

maj_vis

Data format: Raster Dataset - ESRI GRID

File or table name: maj_vis

Coordinate system: Universal Transverse Mercator

Abstract: Majority Filter of Visibility Reclass for Town of Day. This layer was used in final visibility results. Used Majority Filter command default settings.

FGDC and ESRI Metadata:

- [Identification Information](#)
- [Spatial Data Organization Information](#)
- [Spatial Reference Information](#)

Geoprocessing History

Geoprocessing History:

Process:

- ***Process name:** MajorityFilter_2
- ***Date:** 20050422
- ***Time:** 161638
- ***Tool location:** C:\arcgis\ArcToolbox\Toolboxes\Spatial Analyst Tools.tbx\MajorityFilter
- ***Command issued:** MajorityFilter reclass_vis
D:\GIS\GISSpecialProjects\localgov\day\Maj_Vis FOUR MAJORITY

[Back to Top](#)





Thank You

www.apa.state.ny.us/gis/

John Barge,
NYS Adirondack Park Agency
jwbarge@gw.dec.state.ny.us